

Highest Quality Metal Framing **CHANNEL & ACCESSORY** Solutions

100% USA and Union Made
Buy American Act Compliant
American Iron Steel(AIS) Compliant



PRODUCT OVERVIEW

Our channel, accessories and hardware solutions are used to support, mount, and secure building structures. Mainly used in construction applications because of their strength and adjustable support capabilities that provide walls, ceilings, or floors a firm anchorage. Ideal for structural frameworks and support systems for mechanical, electrical, and plumbing installations.

APPLICATION



Data center ceiling grid

KEY BENEFITS

Easy Install | Durable | Cost-Effective

01 Easy & Fast Installation:
Our prefabricated designs allow quick assembly and adjustment without the need for welding or specialized tools reducing installation time and labor expenses.

02 Durable - Corrosion Resistant:
Our products come with a protective coating that resist corrosion and ensure long-lasting durability. Made from quality materials that provide excellent resistance to wear & tear in demanding environments.

03 Cost-Effective: Strut channels and accessories can be disassembled and reused, offering a cost-effective solution over time.

Proud Members and Compliant Of:





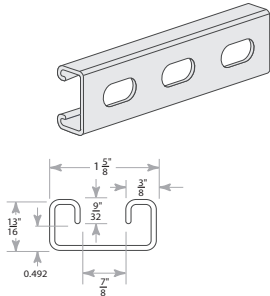
Highest Quality Metal Framing **CHANNEL & ACCESSORY** Solutions Available

Reasons why us... Tailor-Made Solutions

Offering custom products that meet specific industry requirements and specifications of our customers. **Buy American Act and American Iron Steel (AIS) Compliant.**

Channel 100% USA & Union Made

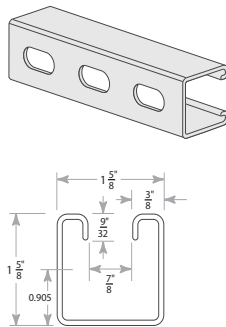
13/16" x 1-5/8"



LENGTHS*

- 10' and 20' lengths
- Tolerance of +/- 1/4"

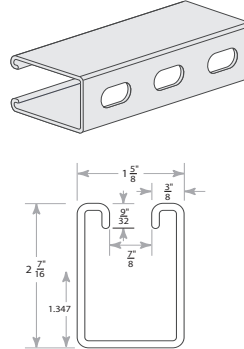
1-5/8" x 1-5/8"



CONFIGURATIONS

- All channel is available in standard and welded configurations with and without holes.

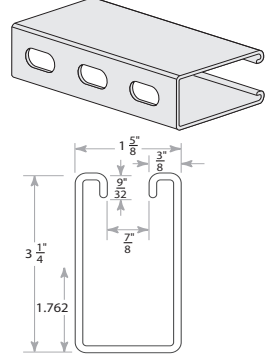
2-7/16" x 1-5/8"



MATERIALS

- Pre-Galvanized Steel
- Plain Steel
- Stainless Steel (Type 304/316L)

3-1/4" x 1-5/8"



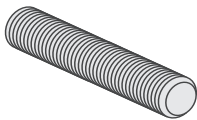
FINISHES

- Hot Dipped Galvanized
- Zinc Trivalent Chromate
- Powder Coated
- Galvaneal (Paint Grip)

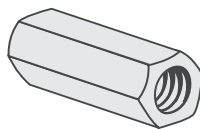
*Custom cut and other lengths, materials and specifications are available upon request.

Full Line of Accessories & Hardware

Secure the functionality of our channels when used in construction and mounting to hang and secure heavy structures.



Threaded Rod



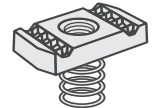
Rod Coupling



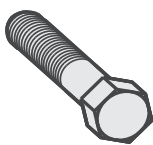
Hex Nut



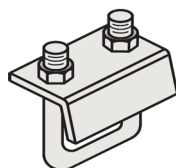
Flat Washer



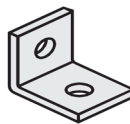
Spring Nuts



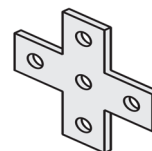
Hex Head Tap Bolt



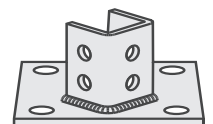
Beam Clamp



Angle Corners



T-Plates



Post Base

All Elgen products are guaranteed by us against defective material. Specifications are subject to change without notice.

Contact us today for product specifications, pricing, availability
and to discuss your next project. Our dedicated team will be happy to assist you.

1.800.503.9805 | info@elgenmfg.com | www.elgenmfg.com